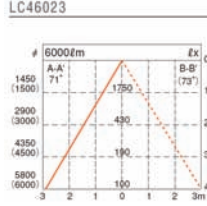
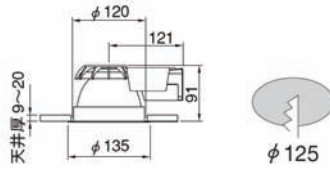


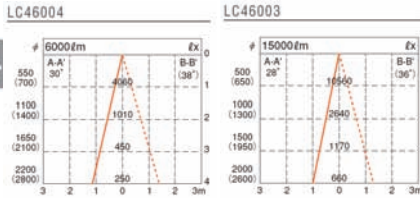
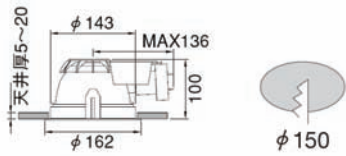
LC46023



燈具效率: 60%
Fixture Efficiency
遮光角度: 20°
Shielding Angle

- 適用光源 : 70瓦 陶瓷金鹵泡
- 燈咀 : E26/E27
- 物料
- 反光罩 : 鋁(壓紋)
- 燈身 : 鋼片
- 邊框 : 鋼片(白色)
- 重量 : 0.55公斤
- 備註 : 需外置電器箱
- Lamps : 70W Cera Arc Lamps
- Lamp holder : E26/E27
- Material
- Reflector : Aluminium (Faceted Finish)
- Body : Steel Plate
- Frame : Steel Plate (White)
- Weight : 0.55kg.
- Remarks : Remote Control Gear Needed

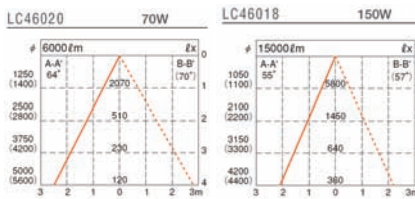
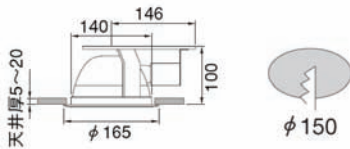
LC46004 (70W) LC46003 (150W)



燈具效率: 77%
Fixture Efficiency
遮光角度: 20°
Shielding Angle

- 適用光源 : 70/150瓦 陶瓷金鹵泡
- 燈咀 : E26/E27
- 物料
- 反光罩 : 鋁(壓紋)
- 燈身 : 鋼片
- 邊框 : 鋼片(白色)
- 重量 : 0.6公斤
- 備註 : 需外置電器箱
- Lamps : 70/150W Cera Arc Lamps
- Lamp holder : E26/E27
- Material
- Reflector : Aluminium (Faceted Finish)
- Body : Steel Plate
- Frame : Steel Plate (White)
- Weight : 0.6kg.
- Remarks : Remote Control Gear Needed

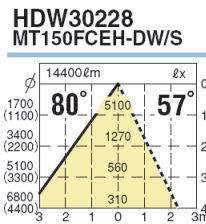
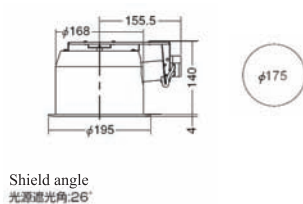
LC46020 (70W) LC46018 (150W)



燈具效率: 75%
Fixture Efficiency
遮光角度: 20°
Shielding Angle

- 適用光源 : 70/150瓦 陶瓷金鹵泡
- 燈咀 : E26/E27
- 物料
- 反光罩 : 鋁(啞面配部份白或鏡面)
- 燈身 : 鋼片
- 邊框 : 鋼片(白色)
- 重量 : 0.6公斤
- 備註 : 需外置電器箱
- Lamps : 70/150W Cera Arc Lamps
- Lamp holder : E26/E27
- Material
- Reflector : Aluminium (Matte with Partially White or Mirror Finish)
- Body : Steel Plate
- Frame : Steel Plate (White)
- Weight : 0.6kg.
- Remarks : Remote Control Gear Needed

HDW30228



燈具效率: 75%
Fixture Efficiency
遮光角度: 26°
Shielding Angle

- 適用光源 : 150瓦 高強度放電式燈泡
- 燈咀 : E26/E27
- 物料
- 反光罩 : 鋁(銀色)
- 燈身 : 鋼片
- 邊框 : 鋼片(白色)
- 重量 : 1.0公斤
- 備註 : 需外置電器箱
- Lamps : 150W HID Lamps
- Lamp holder : E26/E27
- Material
- Reflector : Aluminium (Silver)
- Body : Steel Plate
- Frame : Steel Plate (White)
- Weight : 1.0kg.
- Remarks : Remote Control Gear Needed